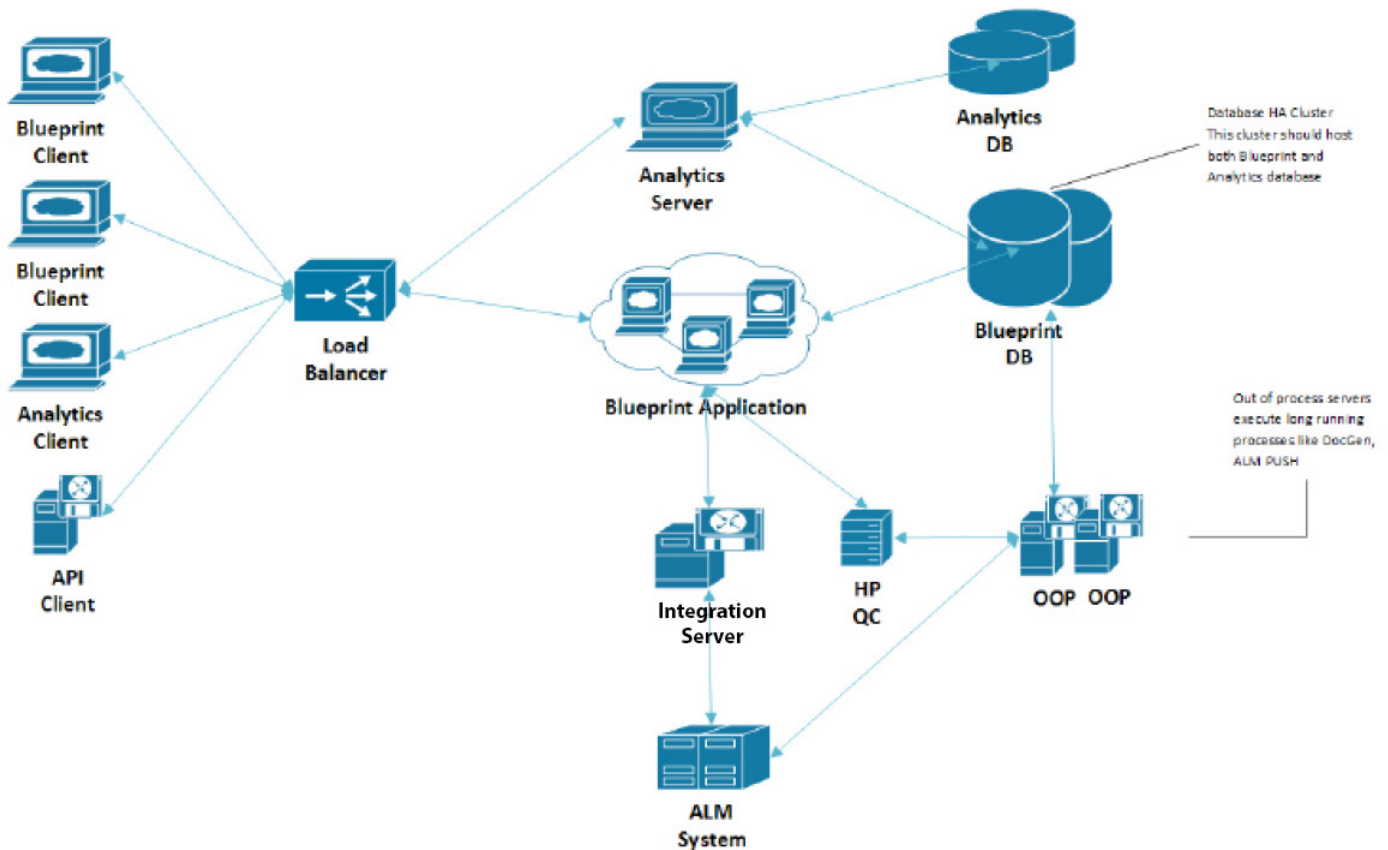


Blueprint Large-Scale Deployments

Blueprint supports large-scale deployments to meet the specific needs of large enterprises. The following deployment diagram illustrates a large-scale deployment of Blueprint for up to 5000+ users.



Performance Statistics

We have extensively studied mature real world deployments of Blueprint to understand usage patterns and peak workloads. We also conduct performance stress testing as part of every release. These stress tests incorporate real-world simulated use cases and complex real-world datasets. Our deployment recommendations are based on our test observations that require acceptable response times during peak load periods.

Recommended Hardware

Based on the typical real-world performance statistics and performance testing results, the following hardware is recommended for large-scale deployments of Blueprint:

Deployment Scenario	Web Servers	Out of Process	Database Servers	Integrations Servers
100–1000 users	1 web server 8 64-bit CPU Cores 2.5 GHz or more 16 GB RAM 100 GB HDD	1 server 4 64-bit CPU Cores 2.5 GHz or more 12 GB RAM 500 GB HDD	1 database server 8 64-bit CPU Cores 2.5 GHz or more 16 GB RAM Shared 1 TB SAN	1 integration server 2 64-bit CPU Cores 2.5 GHz or more 6 GB RAM 50 GB HDD
2500 users	2 web servers Each server: 8 64-bit CPU Cores 2.5 GHz or more 16 GB RAM 100 GB HDD	2 servers Each server: 4 64-bit CPU Cores 2.5 GHz or more 12 GB RAM 500 GB HDD	2 database servers Each server: 8 64-bit CPU Cores 2.5 GHz or more 16 GB RAM Shared 1 TB SAN	2 integration servers Each server: 4 64-bit CPU Cores 3.0 GHz 8 GB RAM 100 GB HD
5000 users	3 web servers Each server: 8 64-bit CPU Cores 2.5 GHz or more 16 GB RAM each 100 GB HDD	3 servers Each server: 4 64-bit CPU Cores 2.5 GHz or more 16 GB RAM 500 GB HDD	2 database servers Each server: 8 64-bit CPU Cores 2.5 GHz or more 16 GB RAM Shared 1 TB SAN	2 integration servers Each server: 4 64-bit CPU Cores 3.0 GHz or more 8 GB RAM 100 GB HDD

Blueprint Analytics

To optimize performance, both the Blueprint database and the Blueprint Analytics database should be hosted on the same high-speed network. The Blueprint Analytics database populates with data from the Blueprint database on a nightly basis. To access the Blueprint database, the Blueprint Analytics database and application make authentication and authorization requests.

The following hardware is recommended for large-scale deployments of Blueprint and Blueprint Analytics:

Deployment Scenario	Web Servers	Database Servers
2500 Users	1 web server 8 64-bit CPU Cores 2.5 GHz or more 12 GB RAM 100 GB HDD	1 database server 4 64-bit CPU Cores 2.5 GHz or more 16 GB RAM Shared 200 GB SAN
5000 Users	1 web server 12 64-bit CPU Cores 2.5 GHz or more 12 GB RAM 100 GB HDD	1 database server 8 64-bit CPU Cores 2.5 GHz or more 16 GB RAM Shared 200 GB SAN

Note: the hardware requirements for Blueprint and Blueprint Analytics are applicable to 6.2 and later.



5 Park Home Avenue, Suite 400
Toronto, ON M2N6L4 Canada

1.866.979.BLUE(2583)
+44 203 051 0432

Blueprint helps organizations to accelerate large, complex IT projects and deliver enhanced business value. With its best-in-class requirements definition and management solution, Blueprint resolves many of the time-consuming, costly, and error-prone functions that challenge IT leaders, thus ensuring that mission critical projects are completed successfully, on time and on budget. Offering seamless integration with application lifecycle management tools, Blueprint works with different development methodologies, including Agile and Waterfall.

© 2015 Blueprint Software, Inc. All rights reserved. All product and company names and marks mentioned in this document are the property of their respective owners.